

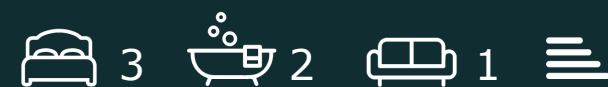
DC  
LANE

SELL • LET • MANAGE



Ashford Hill, Plymouth, PL4 7AU

£1,100 Per Month









# Ashford Hill

Plymouth, PL4 7AU

- First & Second Floor Maisonette
- Mutley Location
- Spacious Accommodation
- Private Entrance
- Available Late August
- Three Double Bedrooms
- Perfect For Sharers
- Arranged Over Three Storeys
- Furnished
- Council Tax Band B

DC Lane are delighted to present this spacious and well proportioned maisonette, arranged over three storeys and ideally situated in the heart of Mutley. Offering excellent access to local amenities, it's within walking distance of both Mutley Plain and the City Centre.

The property benefits from a private ground floor entrance, with stairs leading to the first floor. Here, you'll find a generously sized, light-filled lounge, a modern kitchen/diner with ample storage and room for table and chairs, two double bedrooms, and a bathroom with shower over the bath. A further staircase leads to the top floor, which houses an additional large double bedroom and further bathroom with shower over.

Perfectly suited for professional sharers, this versatile property is available for occupancy from the end of August.

£1,100 Per Month

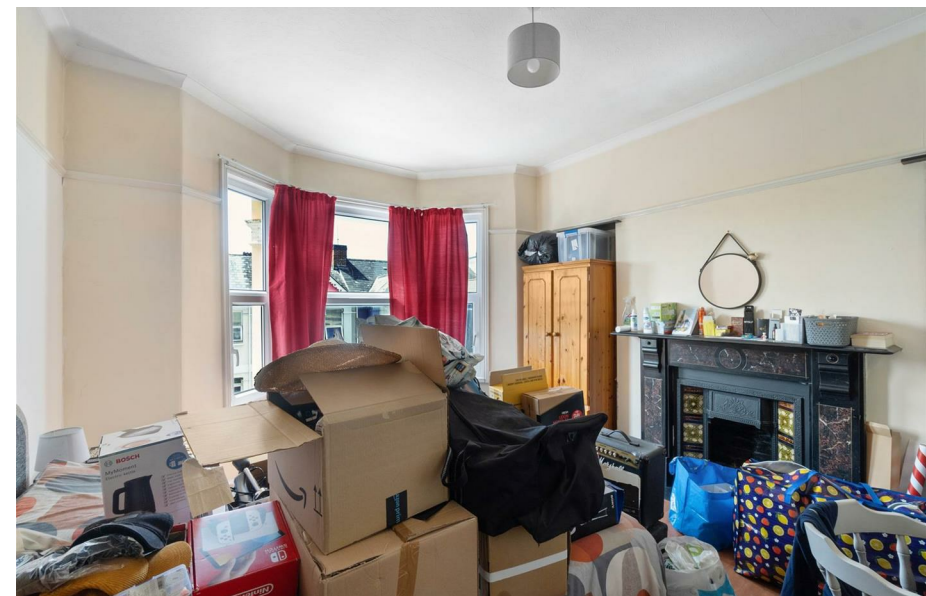




**Directions**

**Scan for Material Information**

**Council Tax Band: B**



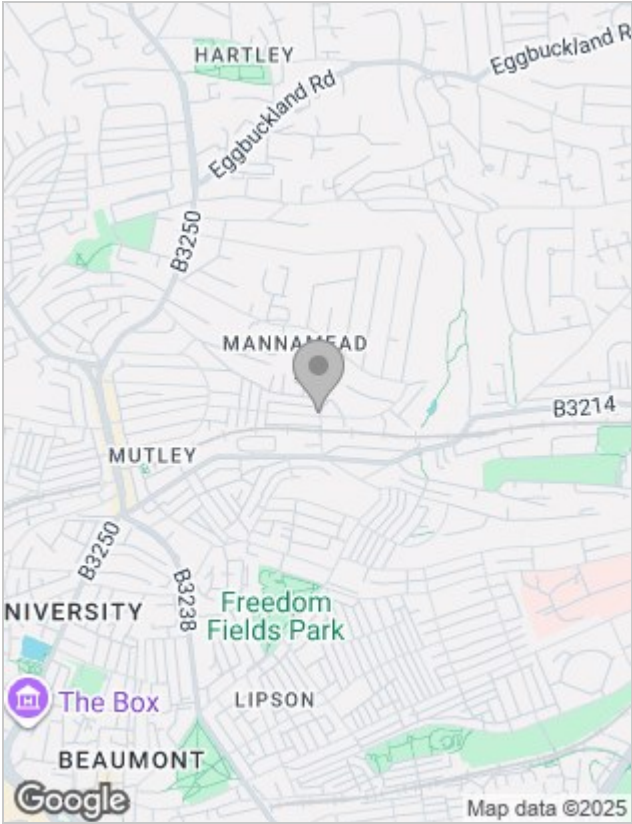




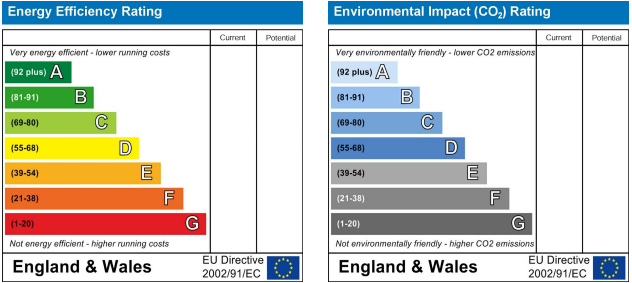
Floor Plans



Location Map



Energy Performance Graph



Viewing

Please contact our DC Lane, Plymouth Office on 01752 874242 if you wish to arrange a viewing appointment for this property or require further information.

The particulars are set out as a general outline only for the guidance of intended purchasers or lessees, and do not constitute, any part of a contract. Nothing in these particulars shall be deemed to be a statement that the property is in good structural condition or otherwise nor that any of the services, appliances, equipment or facilities are in good working order. Purchasers should satisfy themselves of this prior to purchasing.